

1310nm Laser Diode

(5mW, To 5.6 case)



Features

Working wavelength: 1310nm

High output power, with 5mW

Excellent stability

High slope efficiency

Applications

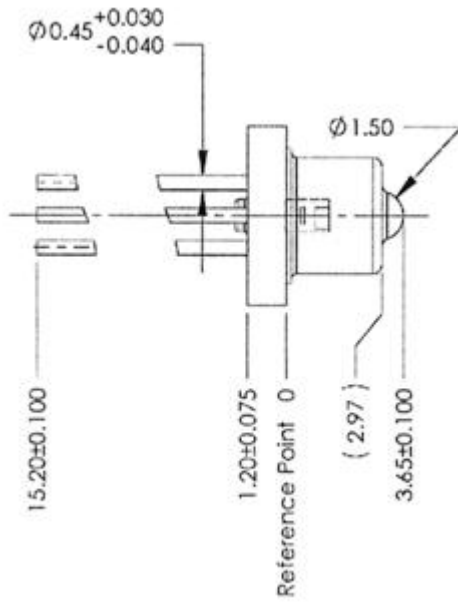
Optical fiber communication

Free-space optical communication

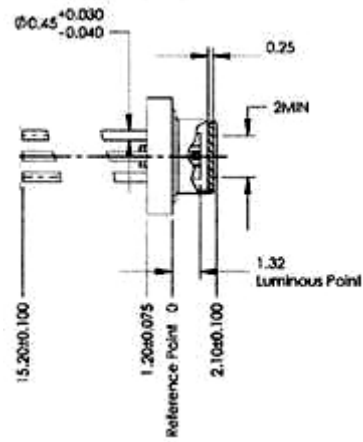
Specifications

| | |
|--|-------------|
| Parameter | LD-1310-005 |
| Output Power (mW) | 5 |
| Wavelength (nm) | 1310 ± 20 |
| Spectral Width (nm) | 3.0 |
| Threshold Current (mA) | 15 |
| Operating Current (mA) | 40 |
| Operating Voltage (V) | 1.5 |
| Slope Efficiency (W/A) | 0.2 |
| Beam Divergence (with flat window cap) (deg) | 40X20 |
| Monitor Current (mA) | 100 |
| Wavelength Temperature Coefficient (nm/°C) | 0.35 |
| Emitter Size (um) | 2X1 |
| Series Resistance | 8 |
| Polarization | TE |
| Package | TO 5.6 |

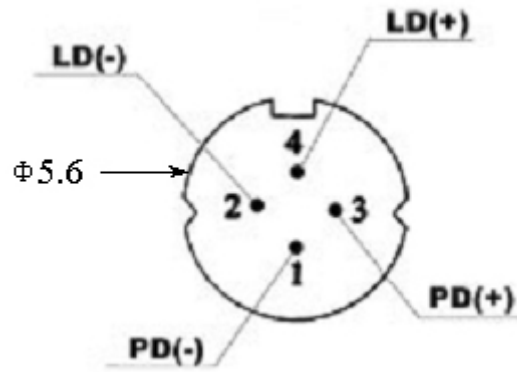
Mechanical Dimensions



TO-18 with a ball lens cap



TO-18 with a flaw window cap



Bottom View